



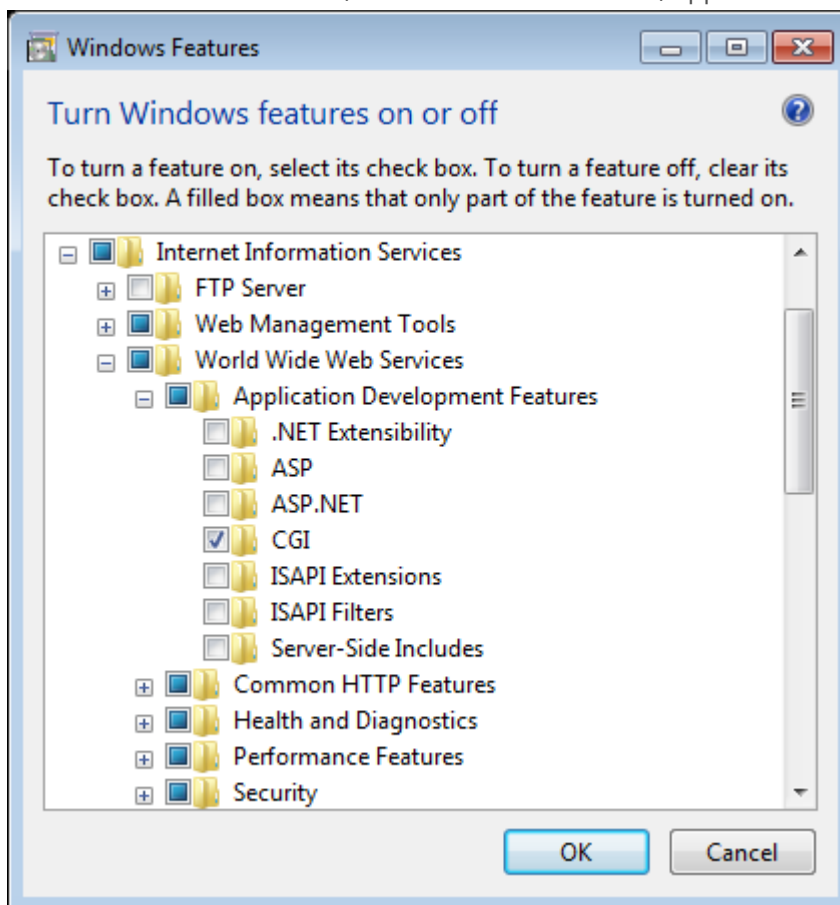
# NorConcertControl Webdisplay manual installation

**Note:** NorConcertControl Webdisplay requires at least Windows 7 to work.

## Installation

- 1) Click the **Start** button  then click **Control Panel, Programs** and then **Turn Windows features on or off** .
- 2) Select the checkbox **Internet Information Services**, to install the standard features of Internet Information Services (IIS).


**Note:** Select the **CGI** feature in Internet Information Services/World Wide Web Services/Application Development Features.

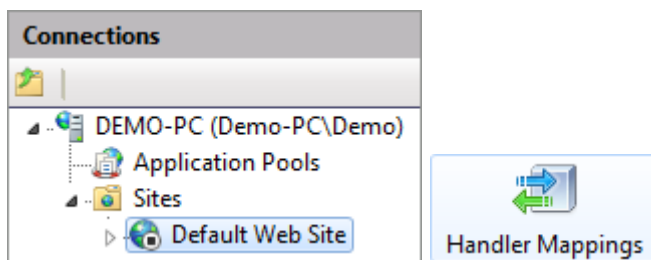


You may have to restart your computer after the installation.

- 3) Execute **vcredist\_x86.exe** and **AccessDatabaseEngineRedist\_x86.exe** in webdisplay\_install and wait for the installation to finish.
- 4) Create a new directory called **NorConcertControl** in **C:\Users\Username\AppData\Local\Norsonic** and grant read and execute permissions to the group **IUSR**. Do to that, right click the directory and click **Properties/Security/Add...** then enter **IUSR** and close all windows with OK.

- 5) Copy the file **NorConcertControl.mdb** from webdisplay\_install to the new directory you created.
- 6) Copy the directory **webdisplay\_install\php5.6** to **C:\inetpub**.
- 7) Delete the automatically create Files in **C:\inetpub\wwwroot** and copy the content of **webdisplay\_install\web** thither.
- 8) Create a new file called **config.php** in **C:\inetpub\wwwroot\php** and write the following text to it:
 

```
<?php
$dbName = "C:\Users\Username\AppData\Local\Norsonic\NorConcertControl\NorConcertControl.mdb";
$splFile = "C:\Users\Username\AppData\Local\Norsonic\NorConcertControl\SPL";
$updateRateInMilliseconds = 5000;
$splUpdateRateInMilliseconds = 500;
$useLanguageFromConcertControl = true;
$language = "en";
?>
```
- 9) Enter the query **IIS** in **Start**  and start **Internet Information Services (IIS) Manager**.
- 10) Select **Default Web Site** and double click **Handler Mappings**.





- 11) Click **Add Module Mapping...** in the **Actions** section.  
Enter the following data:
 

|                               |  |
|-------------------------------|--|
| <b>Request path:</b>          | *.php                                      |
| <b>Module:</b>                | FastCgiModule                              |
| <b>Executable (optional):</b> | C:\inetpub\php5.6\php-cgi.exe              |
| <b>Name:</b>                  | NorConcertControl_Webdisplay_FastCgiModule |

- 12) Go back to Default Web Site Home and double click **Default Document**.



- 13) Click **Add...** in the **Actions** section and enter **index.php**.
- 14) Open your internet browser and type **http://localhost/** in the address bar, to see NorConcertControl Webdisplay.

- 15) To access this page from other computers in the network, you need open port 80 in the firewall.
- 16) For this, click **Start**  then click **Control Panel, System and Security, Windows Firewall** and **Advanced settings** .
- 17) Select **Inbound Rules** and search for **World Wide Web Services (HTTP Traffic-In)**. Right click it and click **Enable Rule**.
- 18) NorConcertControl Webdisplay is now accessible from other computers via the URL ***http://IP of your computer/***.